

Access For All

Accessible nature-based tourism in South Australia

Yvette Eglinton – Department for Environment and Water



Government of South Australia
Department for Environment
and Water

A woman with blonde hair tied back, wearing a purple long-sleeved top and black pants, is seated in a wheelchair. She is looking directly at the camera with a neutral expression. The background is a light blue wall with a white geometric shape on the left and a teal shape on the right.

Yvie Eglinton

Park access for all



Government of South Australia
Department for Environment
and Water

The Stats

- 4.3 million Australians living with a disability, 3.4 million have a physical disability
- A disability may be physical, intellectual, sensory, psychosocial, neurological or a combination of these.
- In 2008, Australia became a signatory to the United Nations Convention on the Rights of Persons with Disabilities.



Accessible Tourism Stats

- Estimated size of the accessible tourism sector is 1.3 million individuals
- Average travel party is 2.8 people
- 3.5 million Australians are aged over 65 years
- The likelihood of disability increases with age
- The accessible tourism market is valued at around \$8 billion



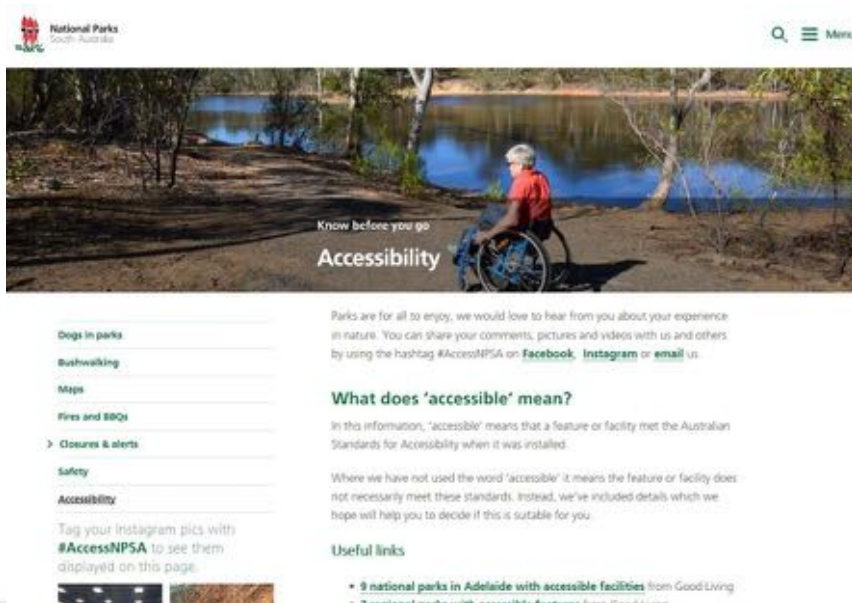
South Australia's National Parks

- South Australia has a beautiful, diverse, and supportive environment that provides material, aesthetic and spiritual benefits.
- People with disability are among visitors to parks and recreation facilities managed by the DEW.
- DEW is committed to creating an inclusive environment
- Parks are to be places for connecting with nature, enjoyment and fun for everyone.



Accessibility and South Australia's Parks

- One of the biggest barriers for people with a disability is lack of information.
- Travellers with a disability need more support in planning their experiences.
- Information provision is a really cheap and effective way of improving access.
- DEW has recognised this and has developed an accessibility page.
- DEW has included Blog articles on their Good Living Blog



Accessibility and South Australia's Parks

- Provide accurate and detailed information
- A picture paints a thousand words
- Videos of accessible features of parks are included on the website







Improving Accessibility

- Identify what is already available
- Accessible features are being reviewed across a range of parks
- Inviting people with a disability to review some parks
- Accessibility map for Belair has been developed
- The Good Scout Travel Company have included reviews on their blog **GOOD SCOUT** TRAVEL CO.



Accessible Features

Naracoorte Caves

- Specially constructed path for mobility and vision impaired people
- Silver in the 'Excellence in Accessible Tourism' category



Accessible Features

Tantanoola Caves

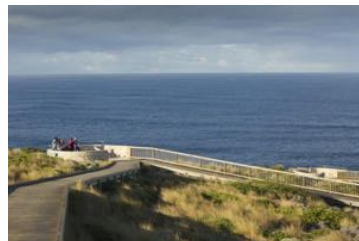
- one of Australia's few wheelchair accessible caves
- comprises an extraordinary display of cave decorations



Accessible Features

Kangaroo Island

- The first couple of km's of the KI wilderness trail is accessible
- The Seal Bay Boardwalk Tour is self-guided, and is fully wheelchair accessible
- A short wheelchair accessible walk to the stunning geological feature of Remarkable Rocks.
- There is a purpose built boardwalk to Admirals Arch where you can see a population of Long nosed fur seals
- Platypus Waterholes Walk in Flinders Chase National Park is wheelchair accessible.



Accessibility Equipment

- Beach chair
- Trail rider through partnership with In The Flinders and Yankalilla Council



Accessible Facilities

- Current facilities



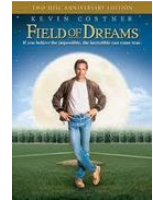
Future Endeavours

- If funding was available



Ecotourism for people with disabilities it's time

- If you provide it they will come



Government of South Australia
Department for Environment
and Water

**“We travel not to escape life,
but for life to not escape
us.”**

**“It is only impossible until it’s
done”** Nelson Mandela

