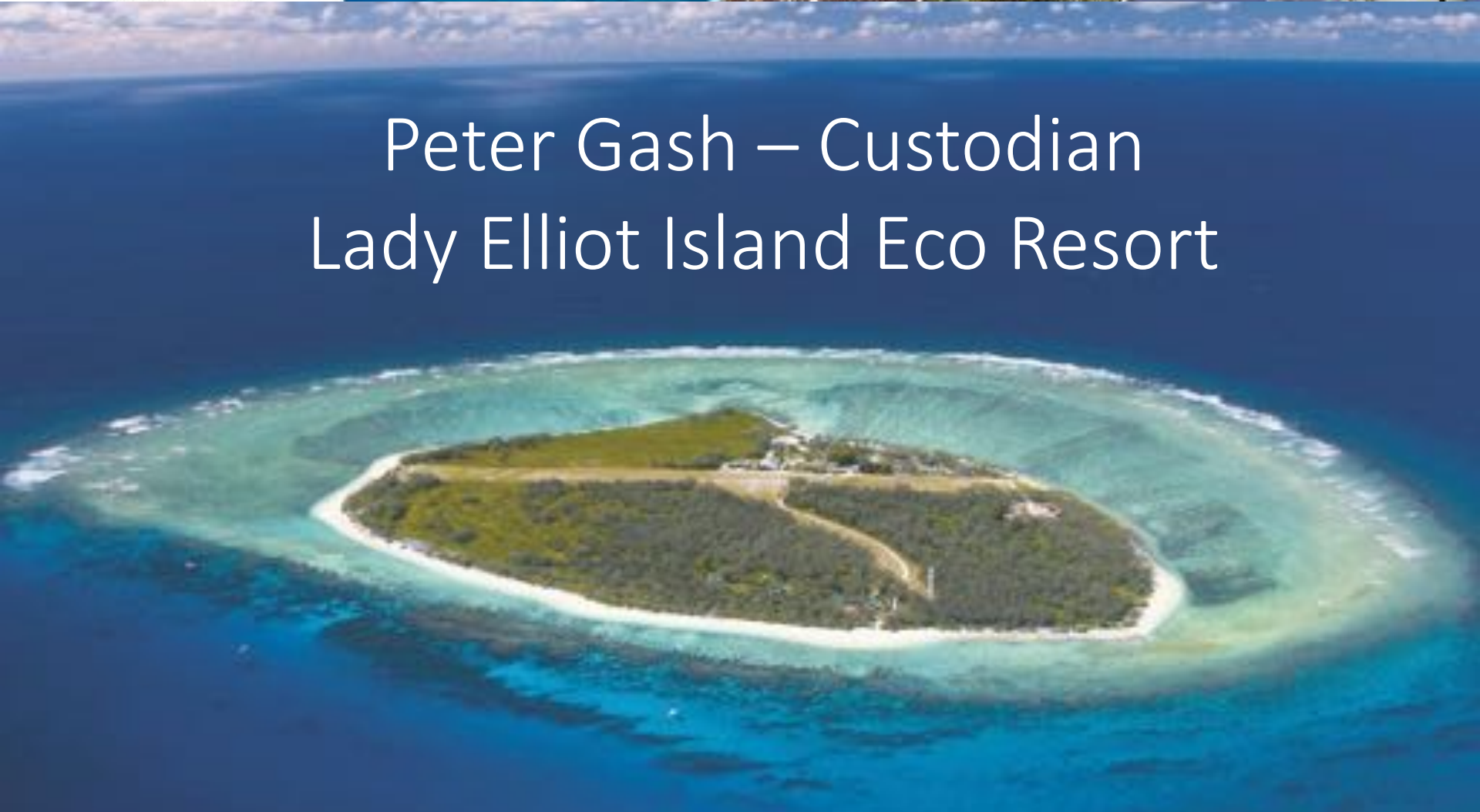




Peter Gash – Custodian Lady Elliot Island Eco Resort













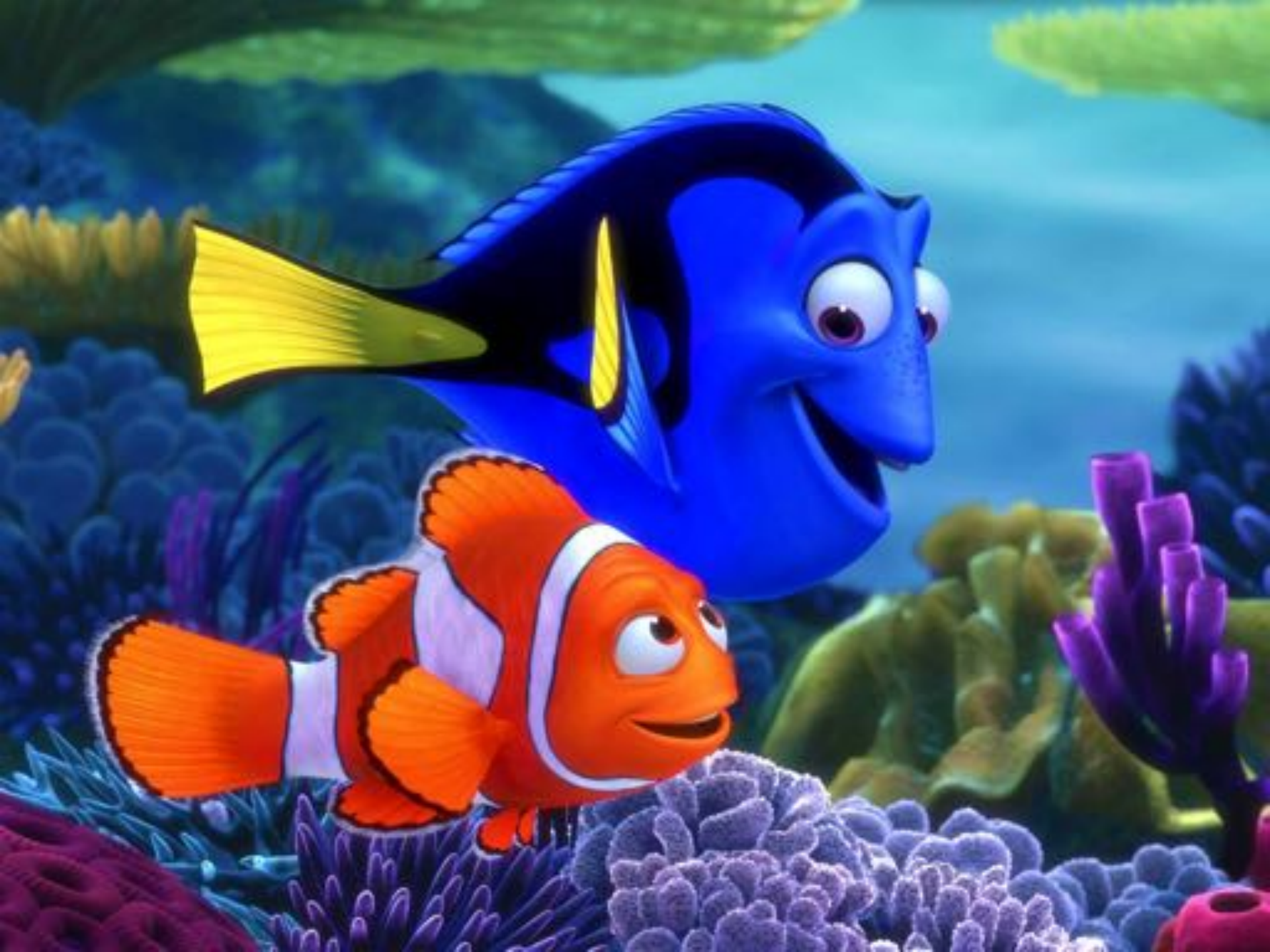


































© FABRICE JAINE
WWW.FABRICEJAINE.COM





















Lady Elliot Island Revegetation Plan



Pine



Coastal She Oak



Pandanus



Sandpaper Fig



Ocotea Bush



Lamara Bush



Guava Plant Compositae



Coastal Jack Rose



Black Bush



Desert Scaevola



New Zealand Spinach



Blackberry



Sticky Grass



Red's Bush Grass



Spine Couch



The aim of the Lady Elliot Island Revegetation Plan is to revegetate Lady Elliot with native 'local use' species, providing habitat for important flora and fauna. This plan includes the removal or control of many introduced species.

The vegetation species shown are just some of the trees, shrubs, plants and grasses which will be planted or sown.

Vegetation buffer planting will be associated around parts of the island, within the Vegetation Heritage Precinct and Public Management Facility. This will provide wildlife screening, assist in the management of some plant species, and reduce the potential for disturbance of nesting seabirds and turtles.

To maintain Cultural Heritage values, non-invasive plant species introduced by the Light House keepers will be retained within the Vegetation Heritage Precinct. This One Page Strip Sheet provides a glimpse into the future.

DRAFT



Immature Tree



Lamara



Exotic Coconut



Desert Poinsettia



Coastal Jack Rose



Pandanus



Blackberry



Dragon Fruit



Agave sp.



Darky Poinsettia



Immature Plant



Blackberry



Immature Tree



Green Plant



Green Plant

To be planted

To be removed

















Hybrid Solar Power Station

	2005	NOW	SAVINGS
GHG	540 T	100 T	440 T per year
Daily	550 lts	App.100 lts	>400L daily
Yearly	200,000 lts	40,000 lts	160,000L per year
\$\$	\$240,000	\$48,000	\$192,000
Storage	70,000	<25,000	45,000L <



































CURTIS ENDEAVOUR



16/11/2012























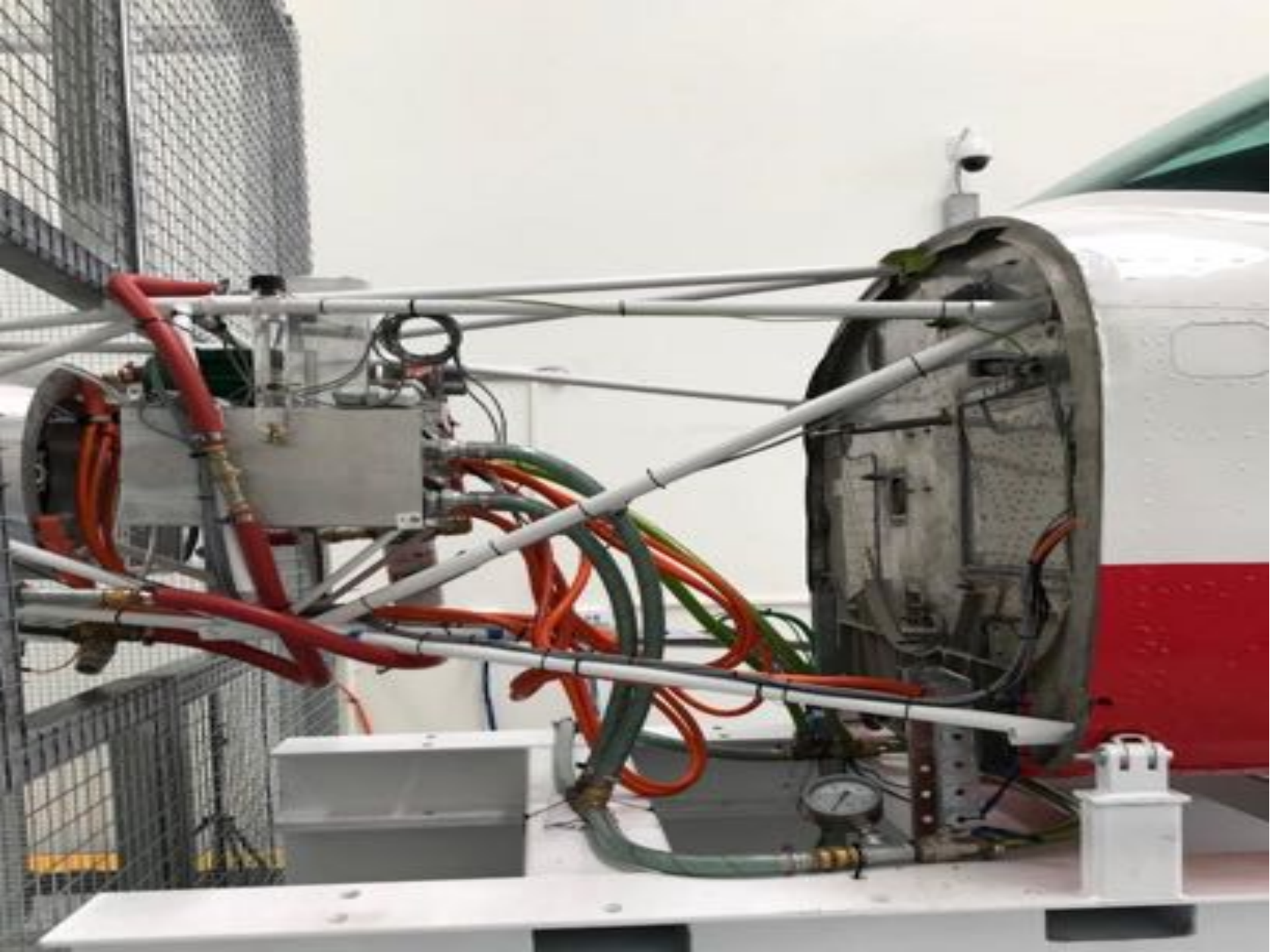


Triple Bottom Line





















© FABRICE JAINE
WWW.FABRICEJAINE.COM











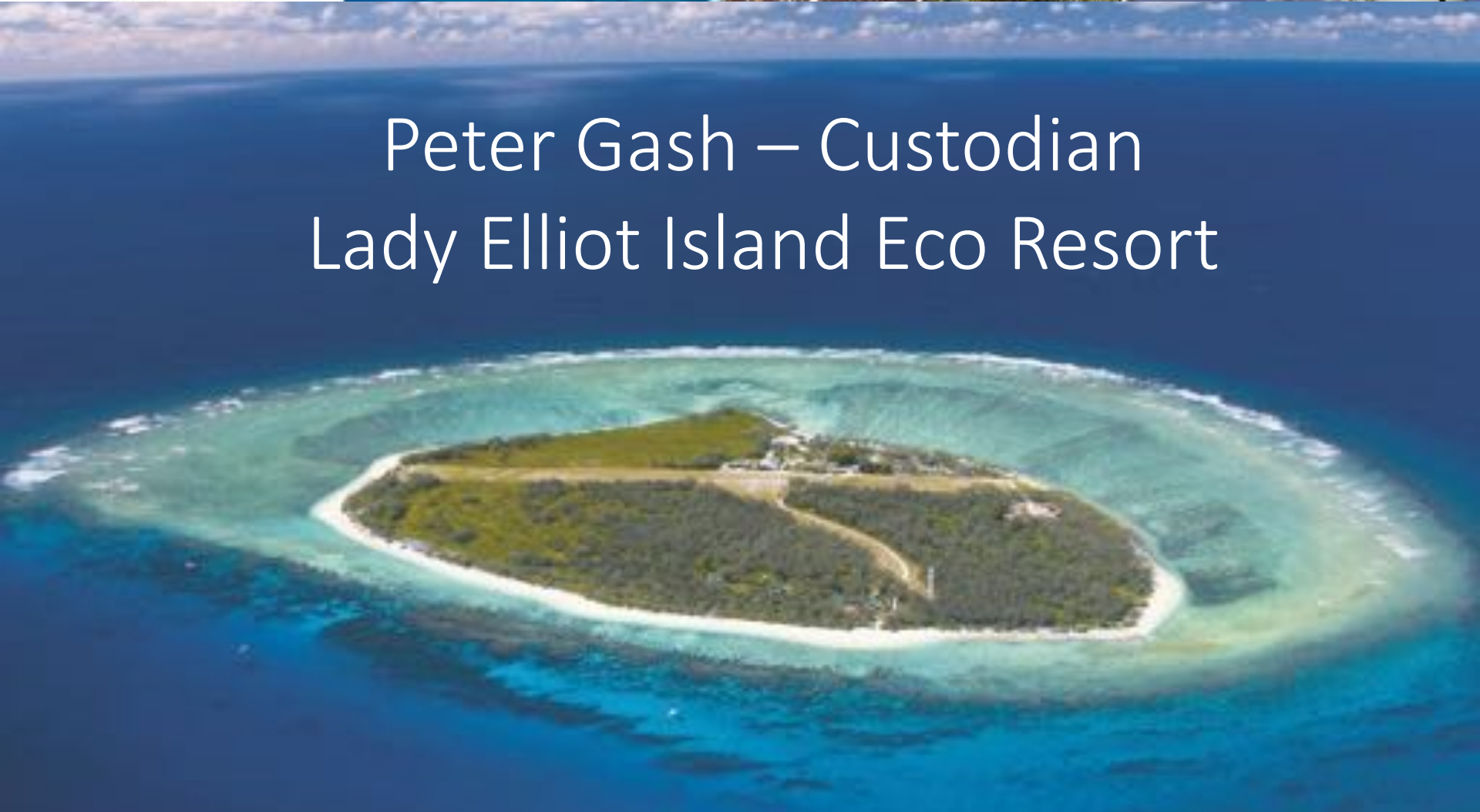








Peter Gash – Custodian Lady Elliot Island Eco Resort







Peter Gash – Managing Director Lady Elliot Island Eco Resort

