



# Conservation Tourism in Practice: Invitation to an Eradication

*Darcelle Matassoni*



Department of  
Primary Industries

**LORD HOWE ISLAND**  
just paradise.

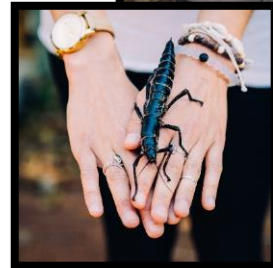
# The idea behind the campaign

1. To access a new market of eco/ conscious travellers
2. To increase the number of visitors over winter
3. To increase the variety of activities on offer for visitors during winter



# What is Conservation Volunteers LHI?

- **Collaborate** with locals and experts on environmental monitoring projects
- **Contribute** to data collection that is used to aid research on environmental issues and inform environmental management and policy
- **Learn** about Lord Howe Island's unique World Heritage environment as you engage with endemic and critically endangered species.



# CVLHI 2018 Overview (14<sup>th</sup> May – 16<sup>th</sup> Sept)



- Successfully attracted travellers with a 'conservation volunteering' motivation (66%)
- Changed the demographic of winter visitors to the island
- 76% stated this was their first visit
- Over 350 registered visitors participated in conservation activities
- The winter visitor experience was enhanced with 53 different activities offered
- Valuable data was collected to assist conservation projects



# Conservation Volunteering – Lord Howe Island



## **The Friends of Lord Howe Island**

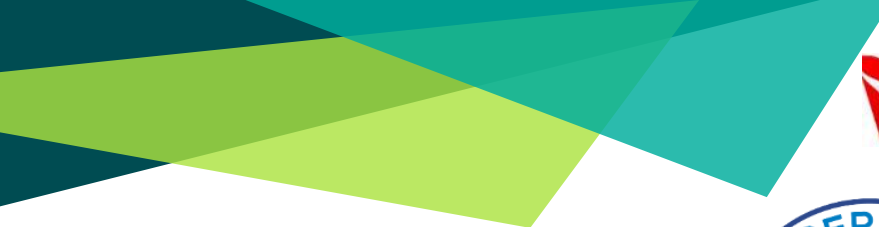
The Friends of Lord Howe Island was set up in 2001 to assist the Lord Howe Island Board with weed eradication and other conservation projects on Lord Howe island.



## **Australian Geographic Expedition - Pinetrees**

Work with scientists from Australian Geographic, the CSIRO and the Lord Howe Island Board to help discover insect species, which are thought to be extinct, or close to extinction.





penguinparade  
phillip island



LORD HOWE ISLAND  
just paradise.



Department of  
Primary Industries



# Collaboration is the key to conservation success!



TARONGA  
ZOO™



Office of  
Environment  
& Heritage



LORD HOWE ISLAND  
**nature  
tours**



saving  
our  
species



# Lord Howe Island's Conservation Legacy starts with **Community**

**Lord Howe Island's community is deeply connected to the environment** and many of the successful conservation projects that have been carried out over the last century have been pioneered by the community, who take great pride in ensuring the Island is protected.

Some of our community projects include:

- Community driven recycling and waste reduction programs
  - ✓ Replacing plastic straws with paper straws
  - ✓ Reducing single use plastic
  - ✓ Bread bags
  - ✓ Boomerang bags
  - ✓ Keep cups



# Lord Howe Island's Conservation Legacy

- Pigs eradicated 1979
- Cats eradicated 1981
- Feral Goats eradicated 1999
- African Big-headed Ant eradicated 2018
- Myrtle Rust 2018
- Wooden recovery program
- Phasmid captive breeding
- Weed eradication program
- Rodent eradication project







# Environmental Projects

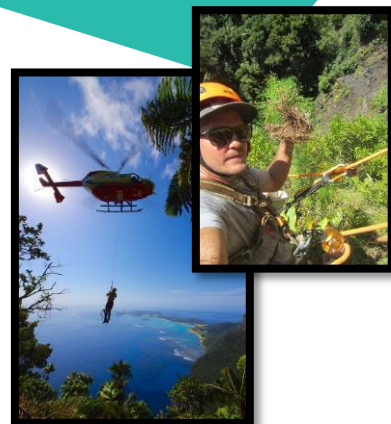
**LORD HOWE ISLAND WEED ERADICATION. PROTECTING PARADISE**

**WEP deployed in 2004:** A multi species program targeting 68 ecosystem transformers, built on earlier efforts by community and volunteers. 400 weed blocks with a repeat search every 2 years

**Results:**

- 2 million weeds removed
- >129,000 hours of grid search method
- >\$6.4 million invested.
- >90% reduction in target weed species

**Current status:** reaching hard to access terrain with new and old technology (heli-lance spray, winch, rope).



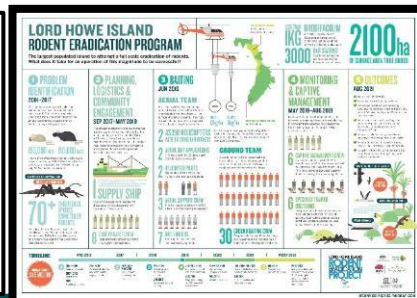
**LORD HOWE ISLAND RODENT ERADICATION PROJECT**

**The problem:** invasive species: pigs, goats, cats and rats introduced soon after settlement.  
5 bird extinctions due to rats: Island Thrush, Robust White-eye, LHI Gerygone, Tasman Starling, Grey Fantail.

**What is at stake?** > 70 species threatened by rodents & 7 species listed as Critically Endangered.

**Call to Action:** reversing declines: Eradicated pigs (1979), cats (1981) and feral goats (1999); Woodhen recovery; Phasmid captive breeding.

**Project Update:** The implementation phase of the REP is well underway for winter 2019.





# Environmental Projects

**Biosecurity Dogs:** Arrived on Lord Howe in Winter 2017  
3 x Handlers (Darcie, Rachel and Tim)

## What they do:

- Check priority freight entering the Island for biosecurity threats
- Cargo Ship the 'Island Trader'
- Freight / cargo planes
- Commercial Planes

Currently our Biosecurity Dogs are trained to detect any incoming Biosecurity threats, in preparation for the more vigorous task of preventing rodent re-entry post eradication.

## What the dogs are trained to protect against:

- Rodents
- Snakes
- Frogs
- Lizards
- Toads



## Biosecurity

*The unique characteristics that make the Lord Howe Island World Heritage area so special also leave it vulnerable to invasion by exotic species.*

# Weekly Activities

**Meet** the Biosecurity Dogs

**Listen** to island naturalist Ian Hutton's lecture LHI History and Conservation

**Learn** local Bird Identification techniques and participate the Birdlife Bird ID Survey

**Meet** the world's rarest insect - the Lord Howe Island Phasmid

**Explore** Nocturnal fauna on our night adventures

**Visit** the 'Battle for Transit Hill' site and learn about the Weed Eradication Program and how we're winning the war on weeds

**Watch** conservation videos on projects around the globe



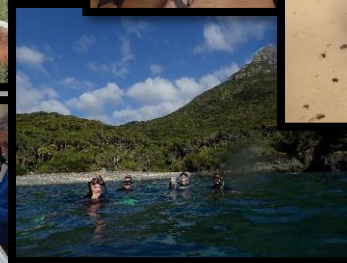
# Citizen Science

## Citizen Science Weeks

- Algae Week (June)
- Beetle Week (July)
- Clown Fish Survey - Finding Nemo (Aug)
- Turtle Survey (Aug)
- Seabird Rescue (Aug)
- Coral Identification Workshop (Sept)

## Ongoing Citizen Science

- Marine Pest Surveys
- Marine Debris Surveys
- Micro Plastics
- Macro Plastics
- Ghost Crab Survey
- Intertidal Surveys
- Nudibranch Census (independent)
- Coral Health Check Survey
- LHI Land Snail (*Placostylus*) survey (Nocturnal)
- Palm survey
- Fungi survey (Independent)
- Invertebrate & Gecko Survey (Nocturnal)
- Sea Spurge removal







**See you in  
2019**